

ANEXA 3

PARTI DESENATE

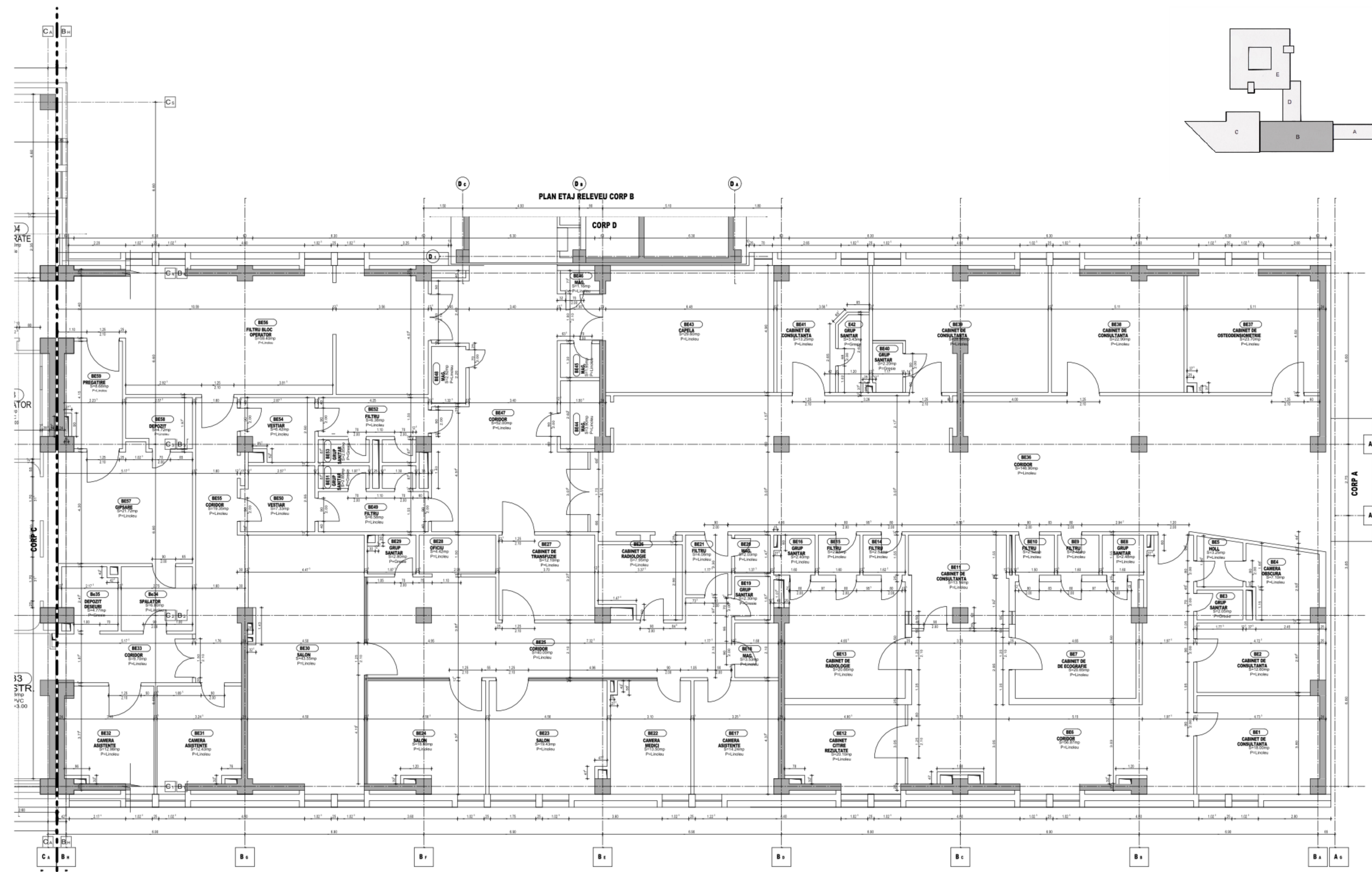
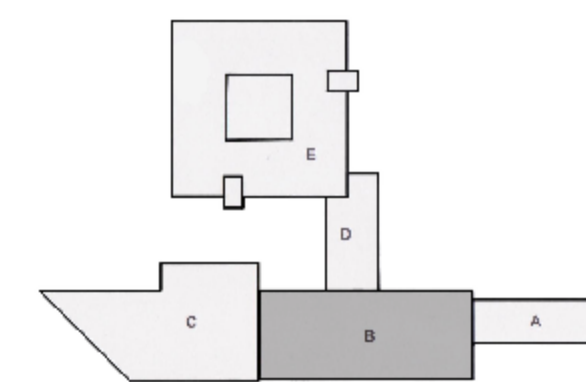
LUCRARI REPARATII BLOC OPERATOR CLINICA DE ORTOPEDIE
SPITALUL CLINIC JUDETEAN DE URGENTA "PIUS BRÎNZEU" TIMISOARA

Întocmit,

S.C. PROJECTMAK S.R.L.



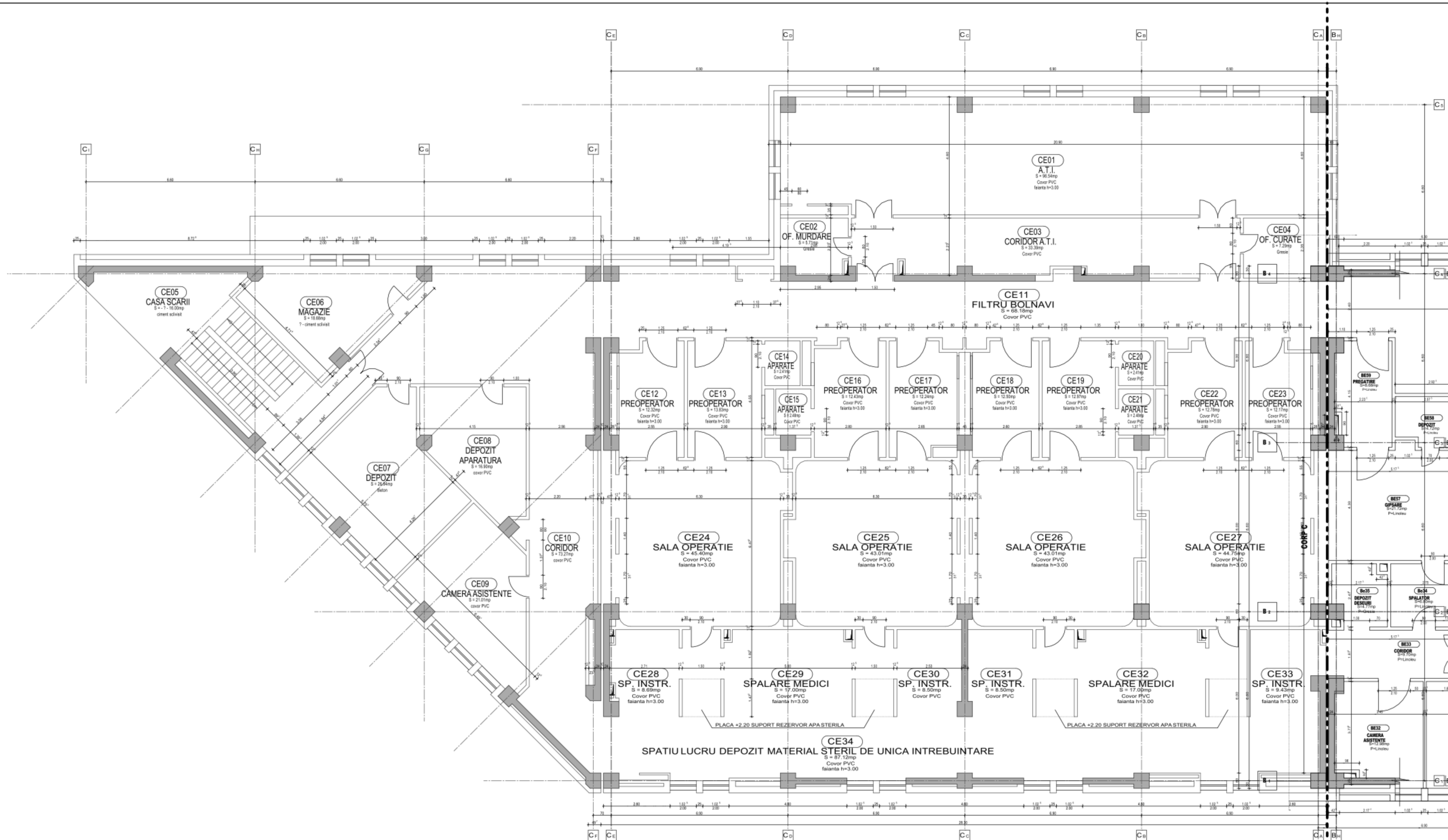
Nr. 006/1260/08.2023



PLAN ETAJ CORP "B" EXISTENT

CORPUL "C"
CORPUL "B"





PLAN ETAJ CORP "C" EXISTENT

CORPUL "C"
CORPUL "B"

